



# BYOx Connect

My Devices Portal



## Contents

Managing your BYOx devices with the My Devices Portal .....	3
Prerequisites .....	3
Accessing My Devices Portal .....	4
Lost device.....	6
Stolen device .....	7
Edit a device description .....	9
Delete a device .....	10
Add a device .....	11

# Managing your BYOx devices with the My Devices Portal

This process outlines how to manage all the devices that you have on-boarded to BYOx network. When you use a laptop computer, tablet or mobile phone to access the BYOx network, you typically use a web browser on the device itself. You may not need to use the My Devices Portal to register those types of devices. However, once you register them, you can use the My Devices Portal to perform operations such as remove them, mark them as lost, or reinstate devices that were marked as lost, once they are found.

## Prerequisites

- **Must** be a Department of Education and Training (DET) user (i.e. have a DET identity and login details).
- **Must** be added to the Staff or Student Active Directory (AD) group (<schoolcode>GG\_UsrBYO<Staff/Student>).
- **Must** have on-boarded at least one device to the DETE-BYOx network.

## Accessing My Devices Portal

1. Open a browser and navigate to: <http://mydevices.byo.eq.edu.au>.
2. Enter your DET credentials, then click "Sign On" to login.

3. Read and accept the Acceptable Use Policy.

4. Select the device you want to manage.

Manage Devices (3)		
Filter items...		
MacBook Air - Test Unit Test Unit 34:26:39:7B:28:4C	Registered	>
Ipad Ipad Device 9C:F3:87:69:D8:02	Registered	>
Android Device B4:CE:F5:9D:08:8D	Registered	>

5. There are four options you can choose, Lost, Stolen, Edit and Delete.

The screenshot shows the 'Manage Device' page in the Queensland Government My Devices Portal. The page header includes the Queensland Government logo and the text 'My Devices Portal'. A user is logged in as 'jgold88'. The main content area is titled 'Manage Device' and contains the instruction 'Select an operation you would like to perform on your device.' Below this is a table displaying device information:

Device status:	Registered
Device name:	Ipad
Device ID:	9C:F3:87:69:D8:A2
Description:	Ipad device

Below the table are four buttons: 'Lost', 'Stolen', 'Edit', and 'Delete'. At the bottom center is a 'Close' button.

## Lost device

If you lose one of your devices, click the **Lost** button to prevent anyone who finds the device from accessing the school's network.

**Manage Device**  
Select an operation you would like to perform on your device.

Device status: Registered  
Device name: Ipad  
Device ID: 9C-F3-87-89-D8-A2  
Description: Ipad device

[Lost](#) [Stolen](#)  
[Edit](#) [Delete](#)

[Close](#)

If you indicate that this device as lost, it will not have network access until you reinstate it. This might take up to 2 minutes to complete. Do you wish to continue?

[Yes](#) [No](#)

When you identify a device as lost, the system changes its status from **Registered** to **Lost**.

**Manage Devices**  
Need to add a device? Select **Add**. Was your device lost or stolen? Select your device from the list to manage it.

Number of registered devices: 4/5

[Refresh](#) [Add](#)

**Manage Devices (4)**

Filter items...

Test Windows 00:00:00-AA-BB-CC	Pending	>
MacBook Air - Test Unit Test Unit 34:36:38:79:28:4C	Registered	>
Ipad Ipad 9C-F3-87-89-D8-A2	Lost	>
Android Device B4:CE:F5:9D:00:6D	Registered	>

If you find your missing device, click the **Reinstate** button to allow the device to access the BYOx network again without requiring additional provisioning.

Queensland Government My Devices Portal

Welcome jgold88

**Manage Device**  
Select an operation you would like to perform on your device.

Device status:	Lost
Device name:	Ipad
Device ID:	9C:F3:07:89:D8:A2
Description:	Test

If you reinstate this device, it will have network access again. This might take up to 2 minutes to complete. Do you wish to continue?

## Stolen device

If one of your devices is stolen, click the **Stolen** button to prevent the stolen device from accessing the school's network.

Queensland Government My Devices Portal

Welcome jgold88

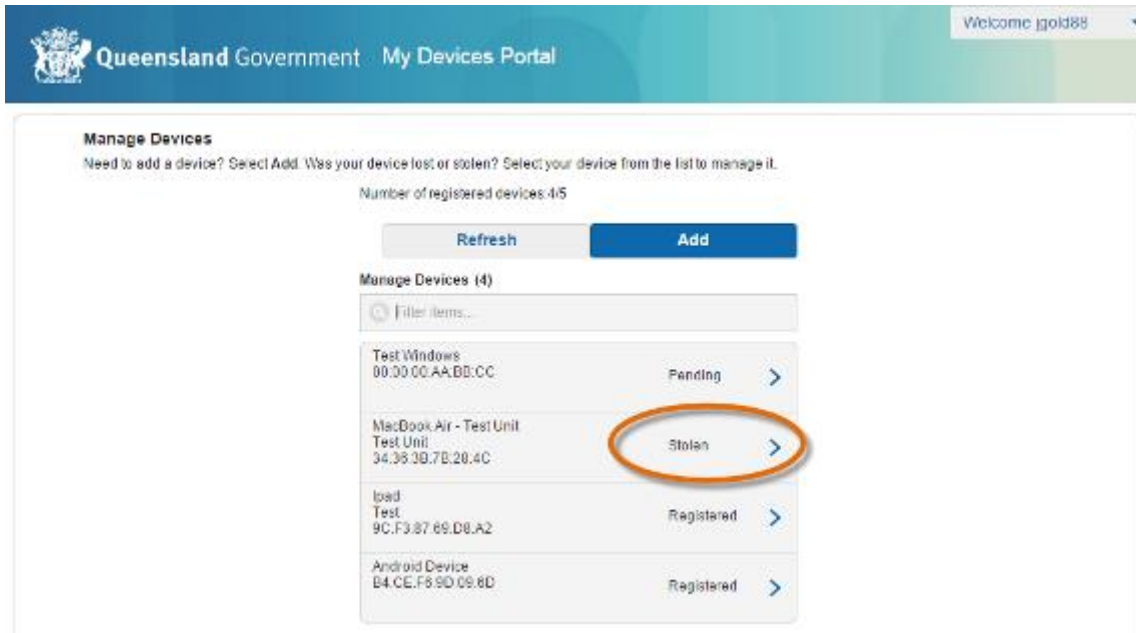
**Manage Device**  
Select an operation you would like to perform on your device.

Device status:	Registered
Device name:	Ipad
Device ID:	9C:F3:87:89:D8:A2
Description:	Ipad device

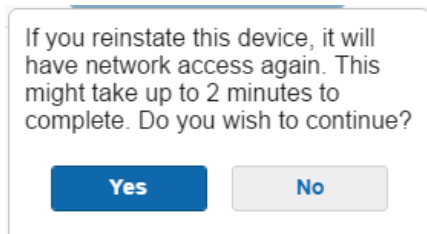
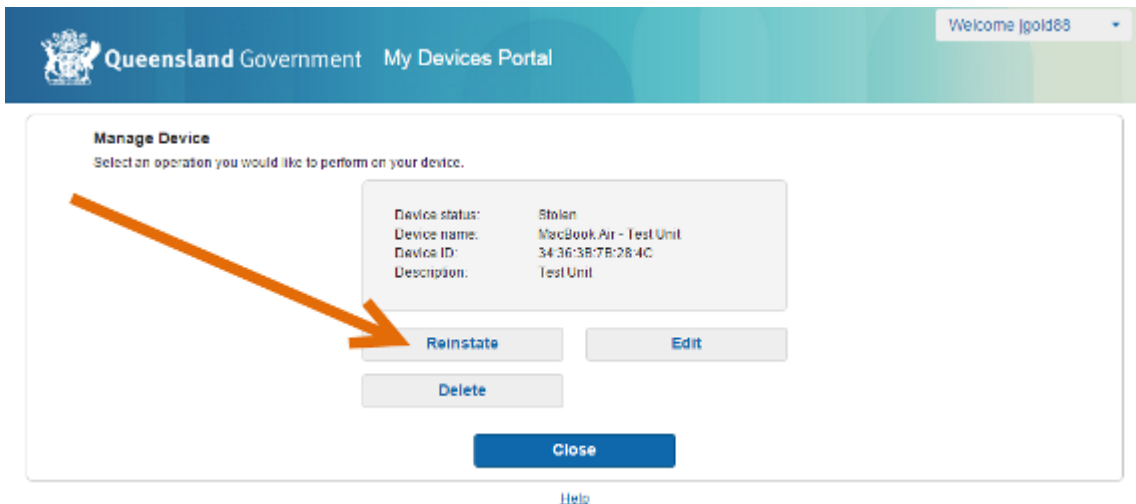
[Help](#)

If you indicate that this device as stolen, it will not have network access until you reinstate it. This might take up to 2 minutes to complete. Do you wish to continue?

When you identify a device as stolen, the system changes its status from **Registered** to **Stolen**.

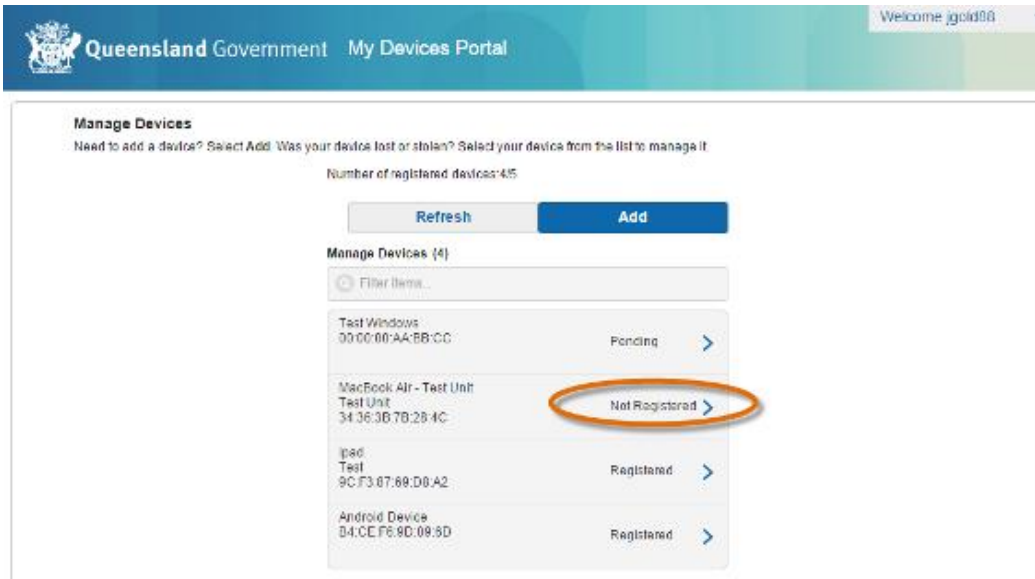


If you recover your stolen device, select the device on the list and click the **Reinstate** button to allow the stolen device to access the network again.



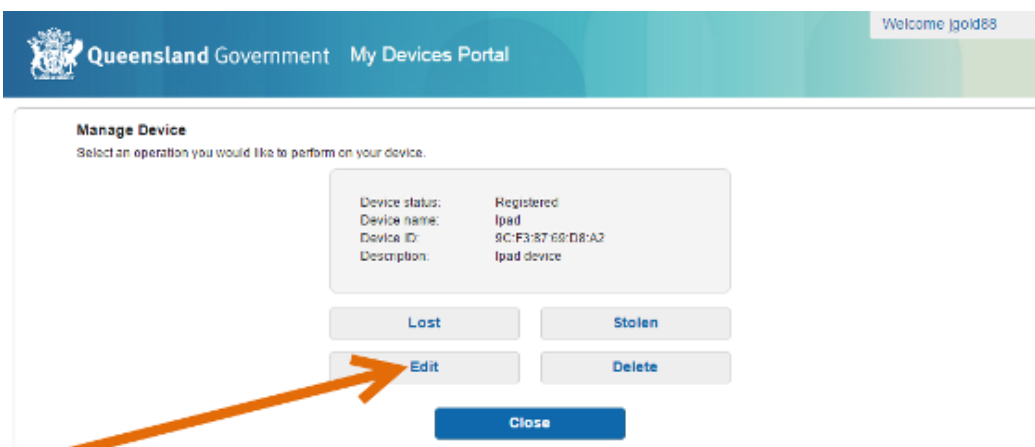


The reinstated device displays as **Not Registered**. The next time you try to connect to the network with your reinstated device, your device will go through the BYOx on-boarding process again.

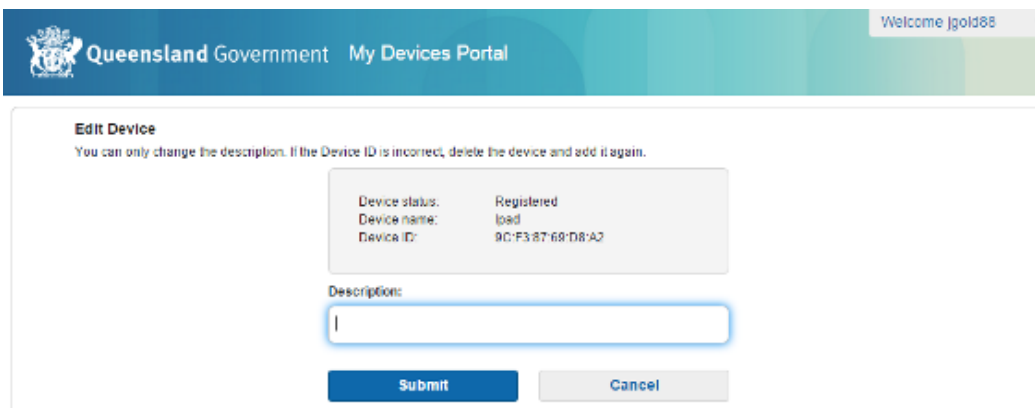


### Edit a device description

If you want to change the description of a device, click the **Edit** button.

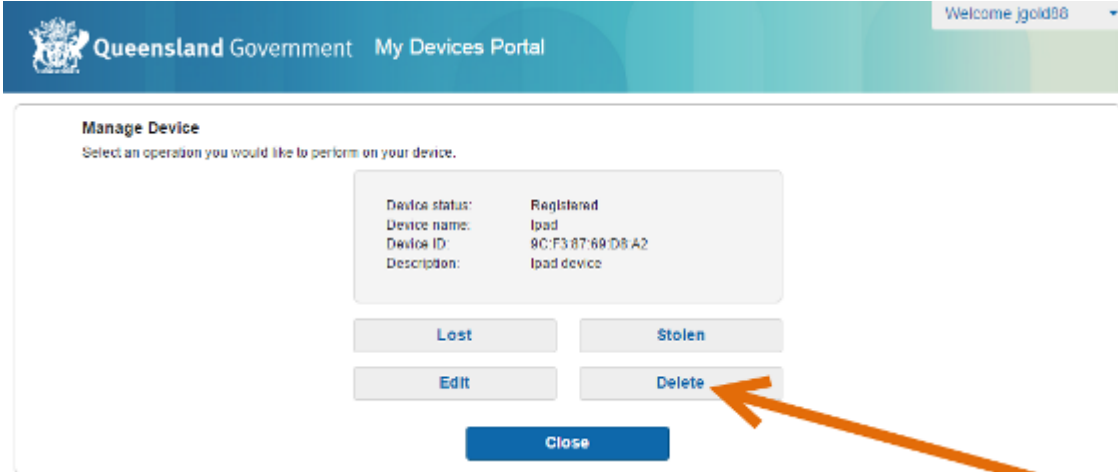


Type in the description, then click the **Submit** button to apply the change.



## Delete a device

If you want to delete a device that you are not using anymore, click the **Delete** button. If you have already reached the maximum number of devices, you need to delete a device before adding a new one.



Queensland Government My Devices Portal

Welcome jgoid88

**Manage Device**  
Select an operation you would like to perform on your device.

Device status:	Registered
Device name:	lpad
Device ID:	9C:F3:87:69:D8:A2
Description:	lpad device

Lost Stolen

Edit Delete

Close

If you delete this device, you will remove it from your device list. This might take up to 2 minutes to complete. Do you wish to continue?

Yes No

## Add a device

You can add a device before connecting it to BYOX network by clicking the **Add** button. Your device will still need to go through the BYOX on-boarding process.

Queensland Government My Devices Portal Welcome jgold88

**Manage Devices**  
Need to add a device? Select **Add**. Was your device lost or stolen? Select your device from the list to manage it.

Number of registered devices 3/5

**Manage Devices (3)**

Filter items...

MacBook Air - Test Unit Test Unit 34:36:3B:7B:28:4C	Registered	>
Ipad Ipad device 9C:F3:07:69:D0:A2	Registered	>
Android Device B4:CE:F0:9D:09:8D	Registered	>

Queensland Government My Devices Portal Welcome jgold88

**Add Device**  
To add a new device, enter the device ID, which displays on your device as the MAC or Wi-Fi address. It consists of 6 alphanumeric number pairs separated by colons such as AA:BB:CC:11:22:33

Device name: \*

Device ID: \*

Description:

[Help](#)